



LIGHTWEIGHT POWER FOR URBAN SOLUTIONS.

OMAL IS WITH YOU.

WWW.OMAL.COM

APPLICATION

MOBILITY: ENVIRONMENTAL AND URBAN SERVICES SERIES

Reduced weight and space thanks to their lightness and compactness.



MAGNUM WAFER & SPLIT WAFER



MAGNUM CASTING SPLIT WAFER



KRATOS



KRAVEN BUTTERFLY VALVES



VIP EVO



ARES



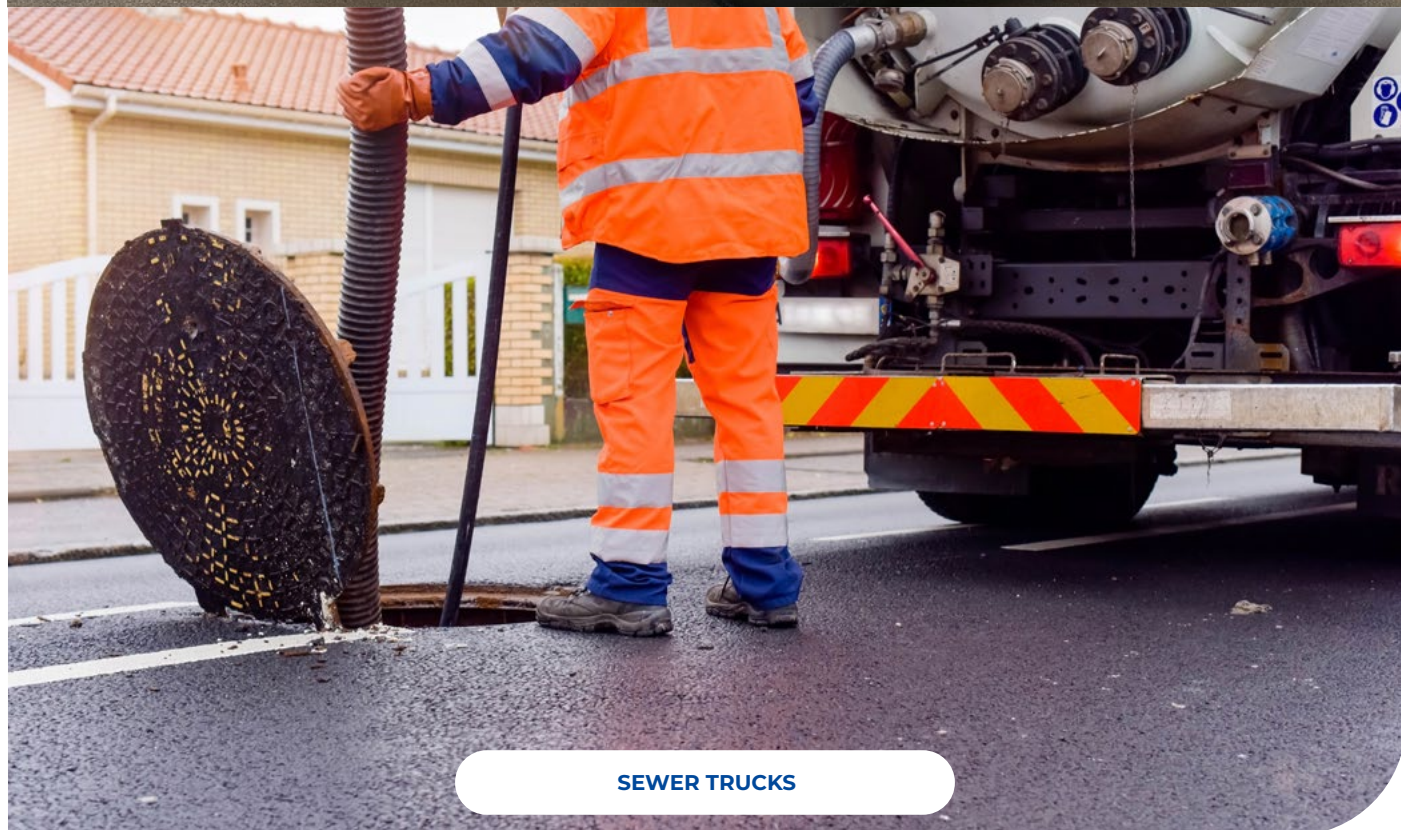
ELECTRIC ACTUATORS



AGO PNEUMATIC ACTUATORS



APPLICATIONS





TECHNICAL DETAILS

MAGNUM

WAFER BALL VALVES



SPECIFICATIONS

- Size:**
 - DN 15 ÷ DN 100 [mm]
 - 1/2" ÷ 4" [inch]
- Body material:**
 - A105 Carbon steel
 - 316 Stainless steel
- Available seats:**
 - PTFE Modified
 - PTFE Glass filled
 - PTFE Carbon filled
 - PEEK
- End connections:**
 - Flanged RF
- Pressure class:**
 - ANSI 150-300; PN 16-40
- Options:**
 - Mono-directional ball
 - Locking device
 - Stem Extension
 - Bottom tank
 - Oxygen use (on request)
 - Hydrogen use (on request)
- Certifications:**
 - Ex CE/UKCA
 - Pressure Equipment CE/UKCA
 - SIL (up to SIL3)
 - TA Luft & Fugitive Emission
 - Fire Safe

MAGNUM

SPLIT WAFER BALL VALVES



SPECIFICATIONS

- Size:**
 - DN 15 ÷ DN 200 [mm]
 - 1/2" ÷ 8" [inch]
- Body material:**
 - A105 Carbon steel
 - 316 Stainless steel
- Available seats:**
 - PTFE Modified
 - PTFE Glass filled
 - PTFE Carbon filled
 - Devlon
 - PEEK
- End connections:**
 - Flanged RF
- Pressure class:**
 - ANSI 150-300; PN 16-40
 - ANSI 600; PN 63-100 (DN≤100)
- Options:**
 - 3-Ways (DN≤100)
 - Mono-directional ball
 - Locking device
 - Stem Extension
 - Bottom tank
 - Oxygen use (on request)
 - Hydrogen use (on request)
- Certifications:**
 - Ex CE/UKCA
 - Pressure Equipment CE/UKCA
 - SIL (up to SIL3)
 - TA Luft & Fugitive Emission
 - Fire Safe

MAGNUM

CASTING SPLIT WAFER BALL VALVES



SPECIFICATIONS

- Size:**
 - DN 25 ÷ DN 100 [mm]
 - 1" ÷ 4" [inch]
- Body material:**
 - CF8M Stainless steel
- Available seats:**
 - PTFE Modified
 - PTFE Glass filled
 - PTFE Carbon filled
 - PEEK
- End connections:**
 - Flanged RF
- Pressure class:**
 - DN≤40; PN 16-40
 - DN≥50; PN 16
- Options:**
 - Mono-directional ball
 - Locking device
 - Stem Extension
 - Bottom tank
 - Oxygen use (on request)
 - Hydrogen use (on request)
- Certifications:**
 - Ex CE/UKCA
 - Pressure Equipment CE/UKCA
 - SIL (up to SIL3)
 - TA Luft & Fugitive Emission
 - Fire Safe



KRATOS

HIGH PRESSURE BALL VALVES



SPECIFICATIONS

**Size:**

- DN 8 ÷ DN 50 [mm]
- 1/4" ÷ 2" [inch]

**Body material:**

- A350-LF2 Carbon steel
- 316 Stainless steel

**Available seats:**

- PTFE Carbon filled
- PTFE Glass filled
- Devlon
- PEEK

**End connections:**

- ISO 228-1
- NPT (ANSI B1.20.1)

**Max pressure:**

- PN 414 (varies by size)
- 6000 PSI (varies by size)

**Options:**

- Oxygen use (on request)
- Hydrogen use (on request)
- Mono-directional ball
- BW / SW connection
- Stem Extension

**Certifications:**

- Ex CE/UKCA
- Pressure Equipment CE/UKCA
- Fugitive Emission
- SIL (up to SIL3)
- Fire Safe

KRAVEN

BUTTERFLY VALVES



SPECIFICATIONS

**Size:**

- DN 40 ÷ DN 300 [mm]
- 1 1/2" ÷ 12" [inch]

**Body material:**

- Cast iron

**Disc material:**

- Cast iron
- CF8M
- Bronze aluminium

**Available seats:**

- EPDM
- NBR
- FKM
- PTFE

**End connections:**

- Wafer
- Lug

**Pressure class:**

- ANSI 150, PN 10-16, PN 6

**Options:**

- Pneumatic actuation
- Electric actuation
- Gear box

**Certifications:**

- Ex CE/UKCA
- Pressure Equipment CE/UKCA

VIP EVO®

PNEUMATIC COAXIAL VALVES PN 40 / 580 PSI



SPECIFICATIONS

**Size:**

- DN 10 ÷ DN 50 [mm]
- 3/8" ÷ 2" [inch]

**Body material:**

- Aluminium - brass

**Available seats:**

- PTFE Glass filled
- Sealing: FKM, NBR, EPDM

**End connections:**

- NPT (ANSI B1.20.1)
- ISO 7/1

**Max pressure:**

- PN 40
- 580 PSI

**Variations:**

- Double acting
- Spring return N.C. - N.O.

**Options:**

- Namur plate
- Limit switch
- Oxygen use (on request)

**Certifications:**

- Ex CE/UKCA
- Pressure Equipment CE/UKCA
- SIL (up to SIL3)



ARES

PNEUMATIC ANGLE SEAT VALVES



SPECIFICATIONS

	Size: <ul style="list-style-type: none"> DN 15 ÷ DN 50 [mm] 3/8" ÷ 2" [inch]
	Body material: <ul style="list-style-type: none"> Stainless steel
	Available seats: <ul style="list-style-type: none"> PTFE Modified FKM NBR EPDM
	End connections: <ul style="list-style-type: none"> NPT (ANSI B1.20.1) ISO 7/1 ISO 228-1 Flanged (PN 16 - ANSI 150) Weld ends Clamp
	Max pressure: <ul style="list-style-type: none"> PN 16 - PN 25 230 - 360 PSI
	Variations: <ul style="list-style-type: none"> Double acting Spring return N.C. - N.O. Manual operated
	Options: <ul style="list-style-type: none"> Oxygen use (on request) Namur plate Limit switch box
	Certifications: <ul style="list-style-type: none"> Ex CE/UKCA Pressure Equipment CE/UKCA

EA

ELECTRIC ACTUATORS



SPECIFICATIONS

	Type: <ul style="list-style-type: none"> Electric actuator "AE" on-off rotary type Electric actuator "AM" rotary modular type Electric actuator "EA" on-off rotary type
	Nominal torque: <ul style="list-style-type: none"> 10 Nm ÷ 1960 Nm 88 in-lbs ÷ 17350 in-lbs
	Size: <ul style="list-style-type: none"> AE 10 ÷ AE 2000 AM 20 ÷ AM 2000 EA0035 ÷ EA0240
	Body material: <ul style="list-style-type: none"> Aluminium
	Variations: <ul style="list-style-type: none"> ON-OFF Modulating IP 68
	Options: <ul style="list-style-type: none"> 115 Vac 230 Vac 24 Vdc Torque limiter Space heater R/I converter Speed controller

AGC

ALUMINIUM PNEUMATIC ACTUATORS



SPECIFICATIONS

	Type: <ul style="list-style-type: none"> Scotch yoke
	Nominal torque: <ul style="list-style-type: none"> DA (Double acting): 8 Nm ÷ 8000 Nm 70 in-lbs ÷ 70806 in-lbs SR (Spring return): 15 Nm ÷ 4000 Nm 133 in-lbs ÷ 35403 in-lbs
	Size: <ul style="list-style-type: none"> DA 8 ÷ DA 8000 SR 15 ÷ SR 4000
	Body material: <ul style="list-style-type: none"> Aluminium
	Variations: <ul style="list-style-type: none"> Double acting Spring return N.C. - N.O.
	Options: <ul style="list-style-type: none"> Low temp. version: -50°C / -58°F High temp. version: +150°C / +302°F Adjustable rotation Surface treatments
	Certifications: <ul style="list-style-type: none"> Ex CE/UKCA SIL (up to SIL3)



OMAL S.p.A. Società Benefit

Headquarter Via Ponte Nuovo, 11 - 25050 Rodengo Saiano (BS), Italy

Production Site Via Brognolo, 12 - 25050 Passirano (BS), Italy

Ph. +39 030 8900145 • Fax +39 030 8900423 • info@omal.it

OMAL USA Corp.

1835 Airport Exchange Blvd, Suite 100- 41018 Erlanger (Kentucky), USA

Ph. +1 (859) 900-2108 • info@omal.com

OMAL Asia Pacific Ltd.

26/73, Moo 7, Racha Thewa Sub-district, Bang Phli District,
Samut Prakan Province, (Bangkok), Thailand

Ph. 02-117-1188 • info@omal.co.th

www.omal.com