



KIT PER MONTAGGIO FINECORSA

LIMIT SWITCH MOUNTING KIT

KBF85 KIT DI MONTAGGIO FINECORSA DI PROSSIMITÀ M12

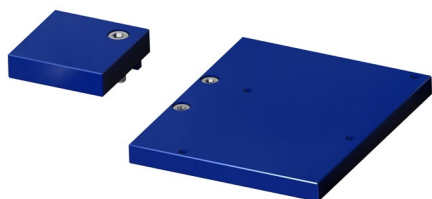
KBF85 MOUNTING KIT PROXIMITY LIMIT SWITCHES M12



| TABELLA CODICI - KIT CODES TABLE - KIT | | | | |
|---|-----------------|-------------------------------|-------------------------------|-------------------------------------|
| Attuatore Actuator | DA8 | DAN15÷DAN120 SRN15 ÷ SRN60 | DAN180÷DAN480 SRN90÷SRN240 | DAN720 ÷ DAN1920 SRN360 ÷ SRN960 |
| KIT | KBF85008 | KBF85015 | KBF85060 | KBF85960 |
| A richiesta disponibili kit per montaggio di finecorsa di prossimità M18 e misure superiori a DAN1920 On request are available kits for mounting proximity limit switches M18 e size bigger than DAN1920 | | | | |

KBF66 KIT DI MONTAGGIO FINECORSA ELETTROMECCANICI ANTIDEFLAGRANTI - FE660000

KBF66 MOUNTING KIT FOR EXPLOSION PROOF LIMIT SWITCHES - FE660000



| TABELLA CODICI - KIT CODES TABLE - KIT | | |
|---|-------------------------------|------------------------------------|
| Attuatore Actuator | DAN15÷DAN120 SRN15 ÷ SRN60 | DAN180÷ DAN1920 SRN090 ÷ SRN960 |
| KIT | KBF66015 | KBF66060 |
| Misure superiori a DAN1920 a richiesta Sizes over DAN1920 available on request | | |

KBF68 KIT DI MONTAGGIO FINECORSA ELETTROMECCANICI E PNEUMATICI

KBF68 MOUNTING KIT ELECTROMECHANICAL AND PNEUMATIC LIMIT SWITCHES



| TABELLA CODICI - KIT CODES TABLE - KIT | | | |
|---|-------------------------------|-------------------------------|-------------------------------------|
| Attuatore Actuator | DAN15÷DAN120 SRN15 ÷ SRN60 | DAN180÷DAN480 SRN90÷SRN240 | DAN720 ÷ DAN1920 SRN360 ÷ SRN960 |
| KIT | KBF68015 | KBF68060 | KBF68960 |
| Misure superiori a DAN1920 a richiesta Sizes over DAN1920 available on request | | | |

CAVO DI CONNESSIONE PER FINECORSA PEPPERL+FUCHS CON USCITA CONNETTORE (MODELLO V1)

CONNECTION CABLE FOR LIMIT SWITCHES PEPPERL+FUCHS WITH CONNECTOR OUTPUT (MODEL V1)



| TAGLIA - SIZE | CODICE - CODE |
|-----------------------|-----------------|
| Cavo/cable 2 m | KBCP2M00 |
| Cavo/cable 5 m | KBCP5M00 |